



Beauty ▪ Eyelash ▪ Academy

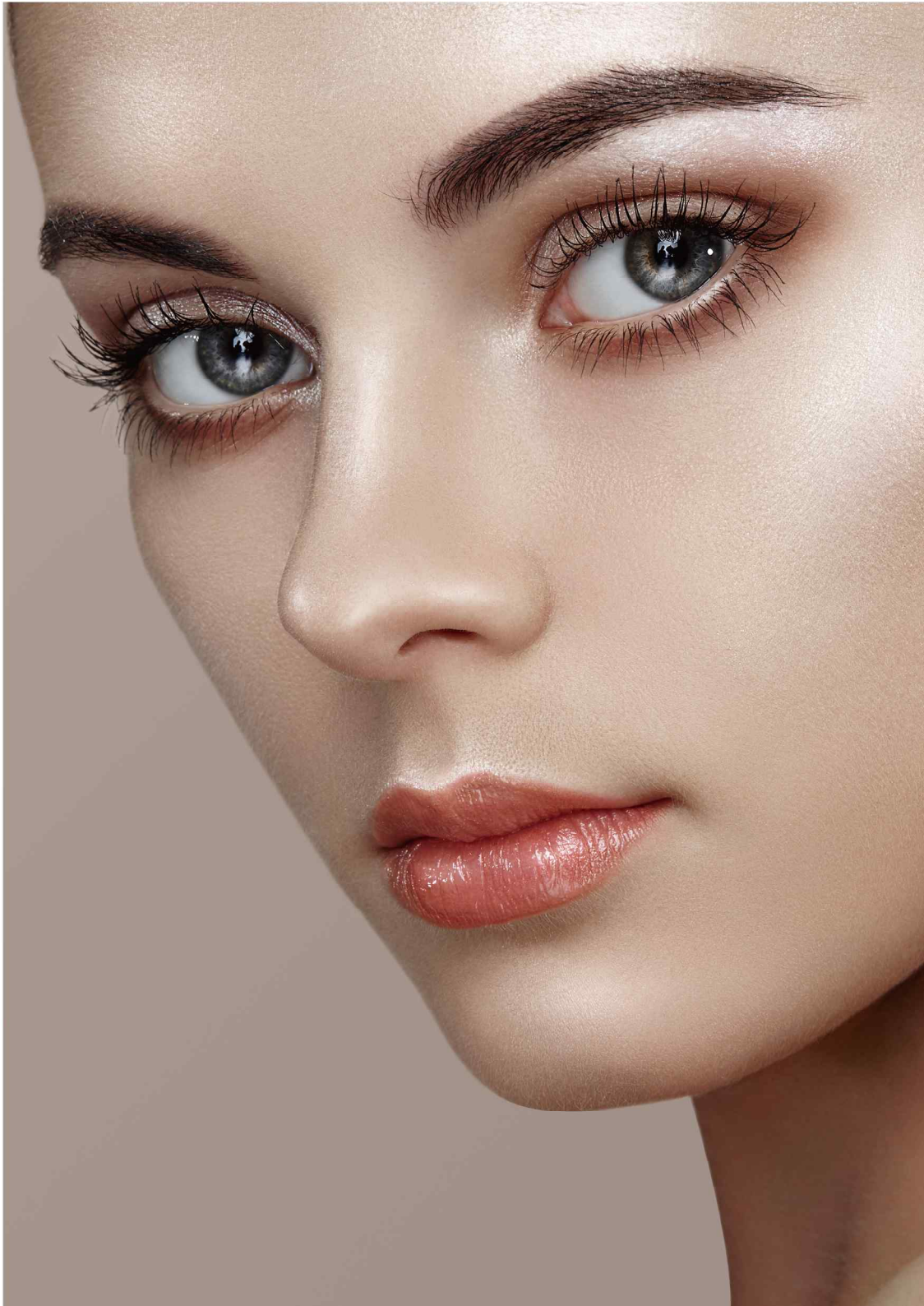
Different You, Various Design

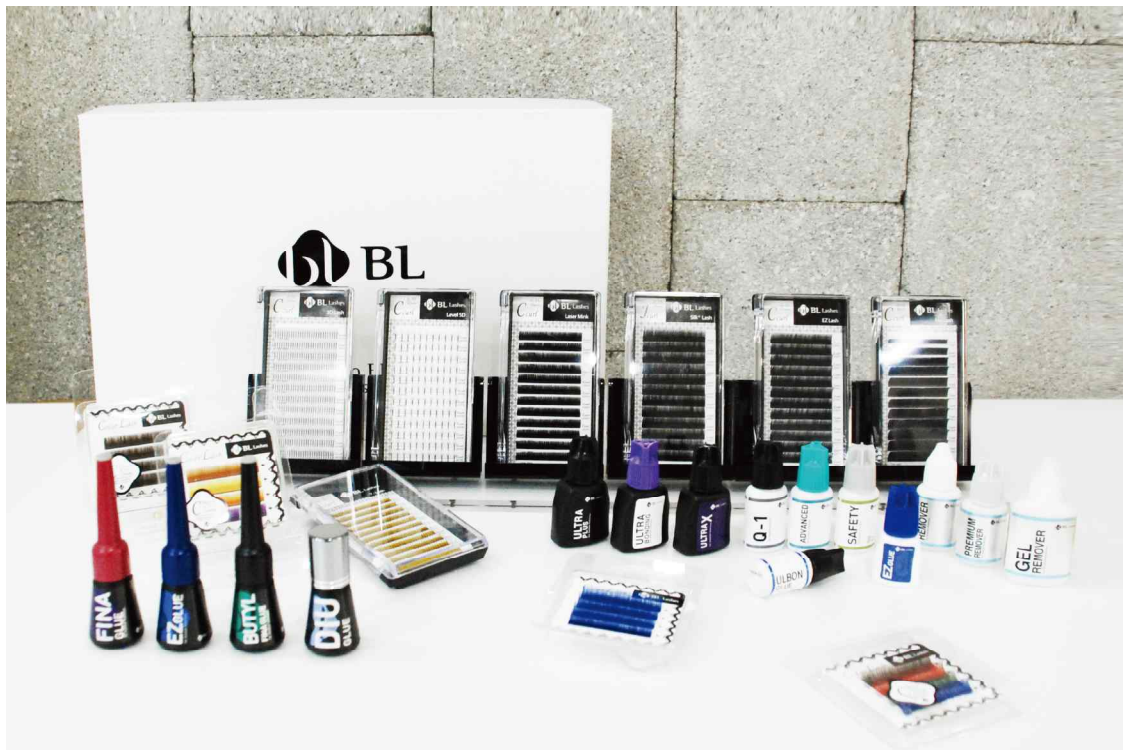
BL privileges you with beauty designed only for you.

BL lashes让你,时刻美丽动人

Total Beauty Solution Design Brand BL

BL!眼部美丽设计专家





Blink lash Stylist & Care is reborn to BL as a luxury brand.
BL refers to the best quality, best service, and best education.

BLINK以BL全新形象，走向你身边！
BL追求 高品质产品，高品质服务，高品质教学。

What is BL ?

color

Black White

A specialized and magnificent eyelash design that can only be created by BL,
just for you, someone who needs that unique touch!
Eyelash and special beauty service design that melts into various occasions is provided by BL

专业美睫品牌 BL 浓缩了十余年的研发技术的 BLINK LASH 的升级品牌。
BL以更专业更合理的价格，为客户量身定制服务理念，走向你身边！



Beyond Lash

Beyond the boundaries of lash leaping towards ultimate beauty

BL品牌 不限于美睫
为“美”的升华而努力



Beauty Lab

A research lab for your beauty, BL develops and creates lashes

BL“美”研发实验室
为你研制美丽的睫毛



Beautiful Life

While you are busy carrying on with life, we will help you to live a more beautiful life in this world

BL为你添姿色 让你更好的享受自己的美丽人生



Behind Lash

Behind every beautiful eyelash, there is struggle and effort to maintain its beauty. BL will be there for you.

一双美丽的睫毛
需要不断的细心护理
让BL呵护你的睫毛

BL Positioning



BL Logo Story



A symbol of beautiful eyes
象征着美丽的眼睛

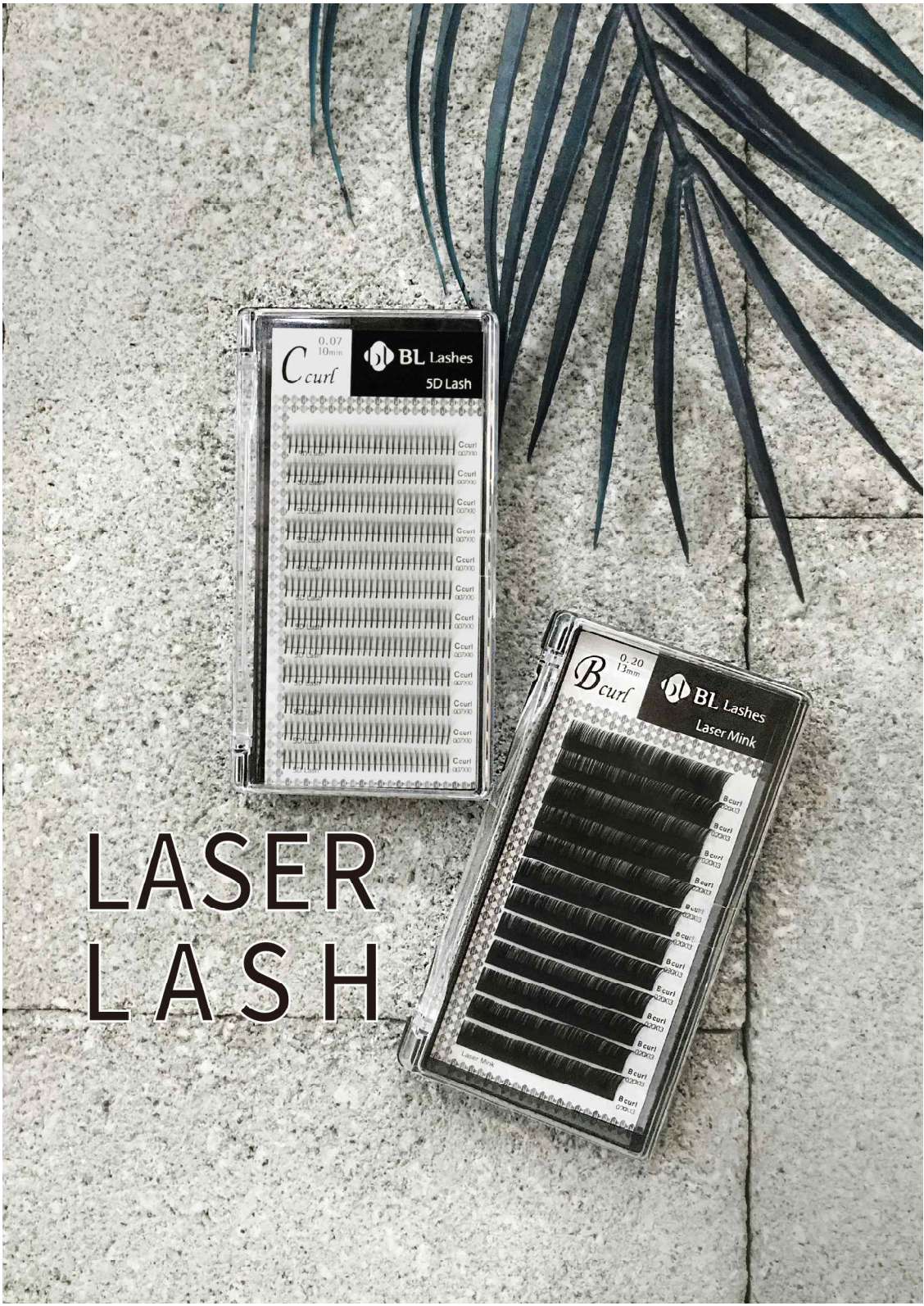
Inherit the visual brand assets of Blink lash
整体美丽品牌



Total Beauty Brand
延续老品牌BLINK LASH的视觉形象

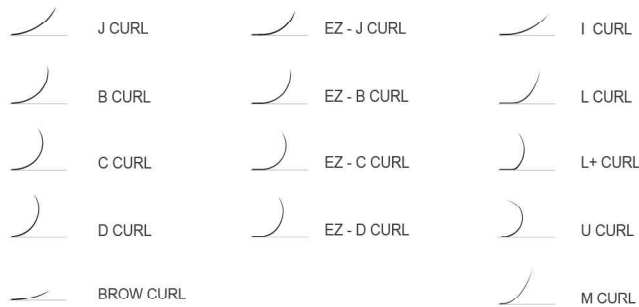
It visualized classy and premium brand image which realizing the brand promise to be a partner for the beautiful life of our customers.
承诺与‘伙伴’共同发展,见证你的美丽过程,进一步升级品牌形象。



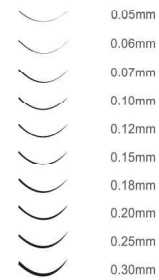


LASER
LASH

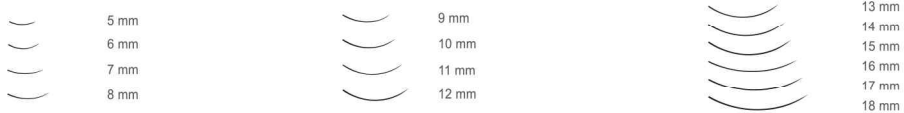
CURL



THICKNESS



LENGTH



LASH SHAPE



BL LASH COLOR



BL LASH CASE



Laser Lash

The first in the world

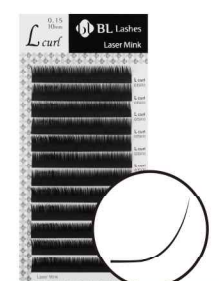
All the laser lashes will stay,
on average 1.5 times longer than
other eyelash extensions

BL镭射嫁接睫毛系列！
持久力提升1.5倍！



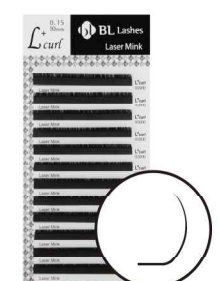
LASER MINK 12 strip
镭射仿真睫毛

CURL	I,J,B,C,D
THICKNESS	0.06 / 0.07 / 0.1 / 0.12 / 0.15 / 0.18 / 0.2 / 0.25 mm
LENGTH	5-20 mm



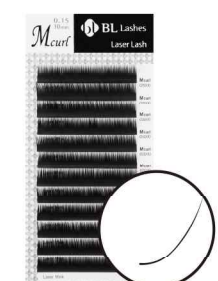
LASER L LASH 12 strip
镭射仿真 L 卷 睫毛

CURL	L
THICKNESS	0.1 / 0.15 / 0.2 / 0.25 mm
LENGTH	8~15 mm



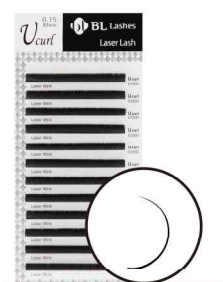
LASER L PLUS LASH 12 strip
镭射仿真 L+ 卷睫毛

CURL	L Plus
THICKNESS	0.1 / 0.15 / 0.2 mm
LENGTH	8~13 mm



LASER M LASH 12 strip
镭射仿真 M 卷睫毛

CURL	M
THICKNESS	0.1 / 0.15 mm
LENGTH	8~14 mm Mix 7-10 / Mix 11-14



LASER U LASH 12 strip
镭射仿真 U 卷睫毛

CURL	U
THICKNESS	0.1 / 0.15 / 0.20 mm
LENGTH	8~14 mm



LASER SILK PLUS 12 strip
镭射蚕丝升级睫毛

CURL	J,B,C,D,
THICKNESS	0.1 / 0.15 / 0.20 mm
LENGTH	8~15 mm / Mix 7-14



LASER EZ LASH 12 strip
镭射仿真 EZ 卷睫毛

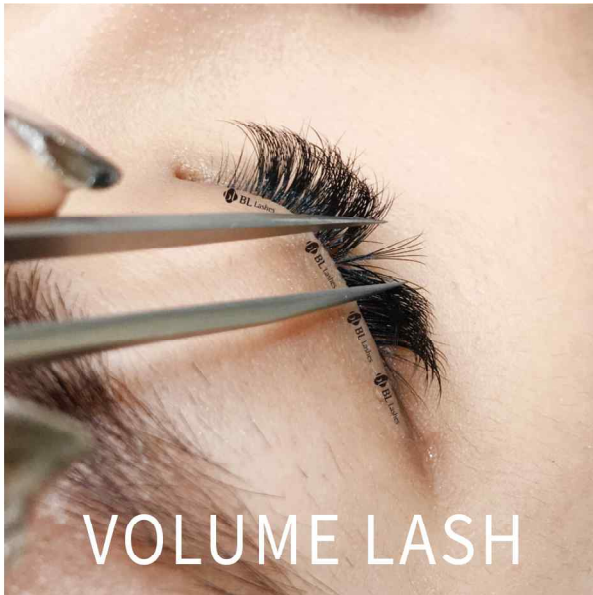
CURL	J,B,C,D,
THICKNESS	0.15 / 0.20 mm
LENGTH	8~15 mm / Mix 8-13



LASER LASH - MIX 12 strip
镭射仿真睫毛 混合

CURL	J,B,C,D,
THICKNESS	0.06 / 0.07 / 0.1 / 0.12 / 0.15 / 0.18 / 0.2 / 0.25 mm
LENGTH	Mix 7-14 mm

Volume Lash



new

BL Lashes *Bcurl* 0.05 Volume 10D

VOLUME LASH 7 strip
多根睫毛

CURL	J,B,C,D,
THICKNESS	0.07 mm - 2D, 3D, 4D-A, 4D-B, 5D, 6D 0.05mm - 10D, 20D
LENGTH	9-13 mm

2D 3D 4D-A 4D-B
5D 6D 10D 20D

BL Lashes *Ccurl* 0.07 5D Lash

5D LASH 12 strip
5D 睫毛

CURL	J,B,C,D,
THICKNESS	0.07 mm
LENGTH	8-15mm / Mix 7-14mm

BL Lashes *Jcurl* 0.15 Y-Lash

Y-LASH 12 strip
Y型 睫毛

CURL	J,B,C,D,
THICKNESS	0.07 / 0.1 / 0.15 / 0.20 mm
LENGTH	8-15mm / Mix 7-14mm

BL Lashes *Ccurl* 0.15 W-Lash

W-LASH 12 strip
W型 睫毛

CURL	J,B,C,D,
THICKNESS	0.07 / 0.1 / 0.15 / 0.20 mm
LENGTH	8-15 mm / Mix 7-14mm

BL Lashes *Ccurl* 0.07 Level 5D

LEVEL 5D 12 strip
新版5D睫毛

CURL	J,B,C,D,
THICKNESS	0.07 mm
LENGTH	0-13 mm / Mix 7-14mm



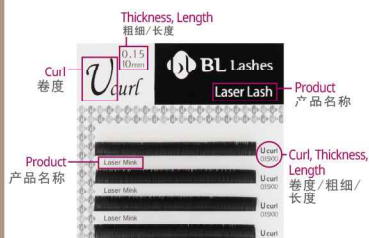
BL Lash

Manual for Technicians of BL lash tray

BL 密排睫毛 使用说明书

1. Explanations

BL 睫毛板设计 说明



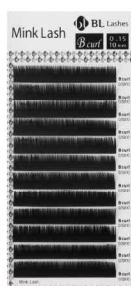
2. Usage

BL 睫毛 美睫应用说明



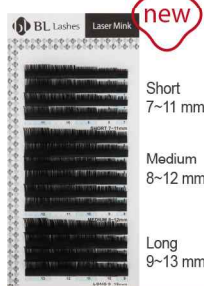
3. Practical use of the side of lash case

BL 睫毛 外包装 使用说明



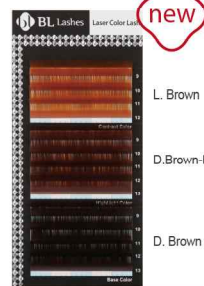
MINK LASH
仿真睫毛

CURL	J, B, C, D, L, L+
THICKNESS	0.07 / 0.1 / 0.15 / 0.2 mm
LENGTH	8~14 mm / Mix 7-14



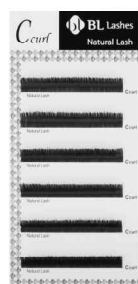
LASER MINK MIX
镭射仿真睫毛 (长度混合)

CURL	J, B, C, D
THICKNESS	0.07 / 0.1 / 0.15 / 0.2 mm
LENGTH	Short 7~11 mm Medium 8~12 mm Long 9~13 mm



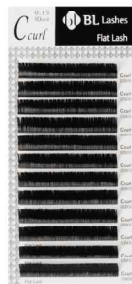
LASER COLOR MIX
镭射彩色睫毛 (长度混合)

CURL	J, B, C, D
THICKNESS	0.15 / 0.2 mm
LENGTH	9~13 mm
COLOR	L. Brown, D. Brown-H, D. Brown



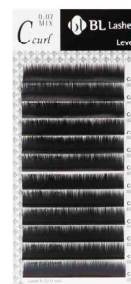
NATURAL LASH
100%真貂毛睫毛

CURL	J, B, C, D
LENGTH	8~14 mm / Mix 8-13



FLAT LASH
扁毛

CURL	J, B, C, D
THICKNESS	0.15 / 0.2 mm
LENGTH	8~15 mm / Mix 7-14



LEVEL LASH
多层次 睫毛

CURL	B, C
THICKNESS	0.05 / 0.07 mm
LENGTH	8, 10, 12 + 9, 10, 11 (9, 11, 13) mm

Special Lash



COLOR LASH MIX-A
彩色睫毛-彩色混合A



COLOR LASH MIX-B
彩色睫毛-彩色混合B



COLOR LASH
彩色睫毛



CURL	J, C
THICKNESS	0.15 mm
LENGTH	9~13 mm
COLOR	MIX-A, MIX-B, Blue, Green, Red, D. Brown



COLOR LASH Brown MIX
彩色睫毛

CURL	J, C
THICKNESS	0.15 mm
LENGTH	9~13 mm
COLOR	D. Brown, L. Brown, D. Brown+I, Red Brown



JEWEL LASH
单根双面贴钻睫毛

CURL	J, C
THICKNESS	0.15 mm
LENGTH	9~13 mm
COLOR	CRYSTAL (SS-7)



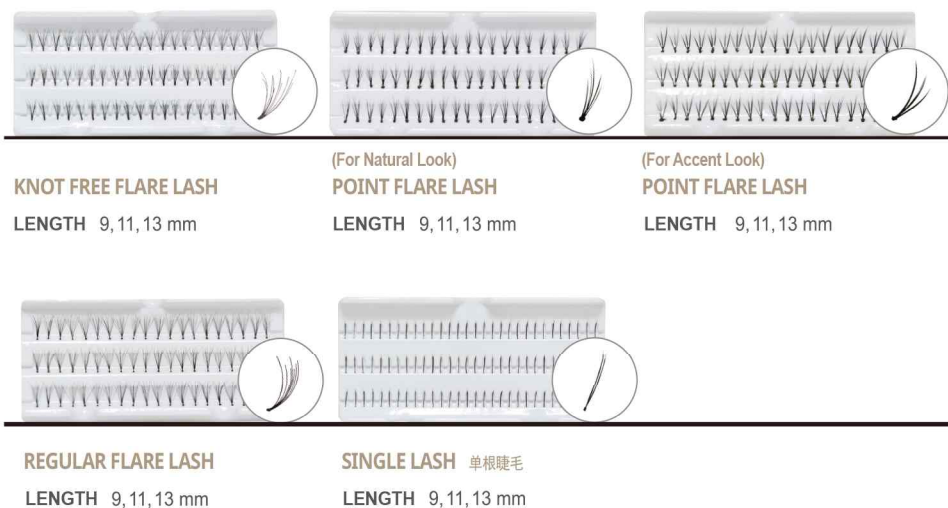
GLITTER LASH
散粉睫毛

CURL	J, C
THICKNESS	0.15 / 0.2 mm
LENGTH	9~13 mm MIX
GLITTER COLOR	Silver, Gold, Red, Purple



Flare Lash

KNOT FREE FLARE LASH



NEO KNOT FREE LASH

Neo Knot Free helps you express a voluminous look with minimum lashes, and you can extend your own lashes this way, as they have a broad adhesion part.

用少量睫毛就能呈现自然浓密的款式，足够的粘贴面使得可以自己嫁接。



DISPOSABLE GLUE 一次性胶水



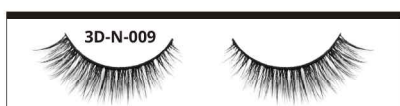
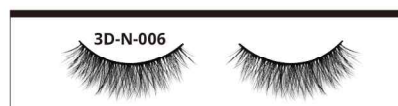
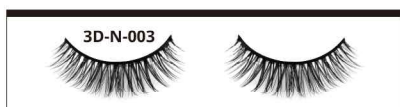
QUICK-SET DISPOSABLE GLUE
Quik Set 一次性胶水
BLACK 10g

DISPOSABLE GLUE
一次性胶水
BLACK/ WHITE 7g

3D STRIP LASH

3D strip lashes are made with PBT fiber and has double layer eyelash line, so allow three-dimensional and voluminous look. It has a wide selection for thickness based on the preference.

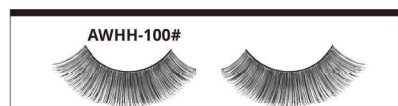
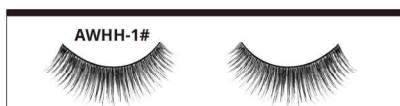
3D一次性睫毛使用PBT原丝，可呈现更有立体感的眼线，根据客户喜好选择睫毛粗细，更有针对性的满足客户需求。



HUMAN HAIR STRIP LASH

Made with fine and soft human hair, so it looks natural and voluminous.

真人毛发制成，假睫毛粗细接近真人睫毛，更柔软，呈现更自然的浓密效果。



B.Brow Extension



B.BROW 嫁接眉毛专用卷度 12 strips

B.Brow has very similar thickness and length to human eyebrow. So you can create more natural eyebrows especially for those whose brows are thin or who have slight curls.

BL 嫁接眉毛产品，用最接近眉毛的卷度和长度制成。眉毛稀疏，眉毛不够浓密的人，可以嫁接出更自然更鲜明的眉毛效果。

CURL	EYEBROW 嫁接眉毛专用卷度
THICKNESS	0.10 mm
LENGTH	5~8 mm (MIX)
COLOR	Black, Dark Brown



B.BROW BLACK GLUE

嫁接眉毛 黑色胶水

B.BROW Black Glue is specially selected for eyebrow extension, and it has very low stimulation and low fume. It will last approximately 2 weeks with proper care. The duration of the eyebrow extension differs depending on hair, skin type and other factors.

B.Brow 嫁接眉毛胶水是特制的胶水。降低了胶水的刺激性，更温和，更无味。嫁接操作合理状态下，可以维持2周左右。持久度根据皮肤的状态和其它因素有所差别。

10g

B.BROW CLEAR GLUE

嫁接眉毛 透明胶水

B.BROW clear glue is specially selected for eyebrow extension, and it has very low stimulation and low fume. It will last approximately 2 weeks with proper care. The duration of the eyebrow extension differs depending on hair, skin type and other factors.

B.Brow 嫁接眉毛胶水是特制的胶水。降低了胶水的刺激性，更温和，更无味。嫁接操作正确状态下，可以维持2周左右。持久度根据皮肤的状态和其它因素有所差别。

10g

B.BROW PRIMER

嫁接眉毛 清洁液

B.Brow Primer removes all of the oil or residue from eye make-up. It will help the extended eyebrow to last longer, it is recommended to use before eyelash extension.

B.Brow 清洁液是嫁接前必备产品。辅助嫁接效果更持久。

15ml

B.BROW REMOVER

嫁接眉毛 卸胶剂

This is a gel-type remover for eyebrow extensions. It will effectively dissolve the adhesive bond, and not damage the natural eyebrows.

嫁接眉毛专用啫喱卸胶剂。无刺激柔和卸胶剂，不伤眉毛，容易卸掉嫁接的眉毛。

15ml



Embrace your beauty *faster and longer*

To be more beautiful, longer.
The most significant strength is its longevity up to 4 to 5 weeks.

迪优大幅降低氰基丙烯酸粘合成分
有效降低胶水的刺激！持久力 达4-5周！

Extension Glue

Fast Drying Glue 快干胶水

new



DIU GLUE 10g

COLOR 颜色
BLACK
ADHESION 黏贴力
BONDING LIFE 持久力
DRYING TIME 干燥速度
STIMULATION 刺激度
VISCOSITY 粘稠度



FINA GLUE 5/10g

COLOR 颜色
BLACK
ADHESION 黏贴力
BONDING LIFE 持久力
DRYING TIME 干燥速度
STIMULATION 刺激度
VISCOSITY 粘稠度



EZ GLUE 5/10g

COLOR 颜色
DARK GREY
ADHESION 黏贴力
BONDING LIFE 持久力
DRYING TIME 干燥速度
STIMULATION 刺激度
VISCOSITY 粘稠度



ULTRA BONDING 5/10g

COLOR 颜色
DARK GREY
ADHESION 黏贴力
BONDING LIFE 持久力
DRYING TIME 干燥速度
STIMULATION 刺激度
VISCOSITY 粘稠度



ULBON 5/10g

COLOR 颜色
PEARL GRAY
ADHESION 黏贴力
BONDING LIFE 持久力
DRYING TIME 干燥速度
STIMULATION 刺激度
VISCOSITY 粘稠度



Q-1 5/10g

COLOR 颜色
BLACK
ADHESION 黏贴力
BONDING LIFE 持久力
DRYING TIME 干燥速度
STIMULATION 刺激度
VISCOSITY 粘稠度

Remover - Tube Type



GEL REMOVER PLUS

加强版啫喱卸胶剂

This Gel Glue Remover+ does not contain Acetone, so causes no harm to the natural lashes. And it dissolves adhesives faster than Gel Remover and it is water soluble to be rinsed easily.

加强版啫喱卸胶剂，不含丙酮成分，不会伤到自身睫毛，同时提高了卸胶速度。加强版啫喱卸胶剂易溶于水，可轻松清洁擦拭。

30g



CREAM REMOVER DOUBLE PLUS

加强版乳液卸胶剂

This Cream Glue Remover++ is extremely gentle on the eyes as it is in cream type so as not to get into the eyes. Because it does not contain Acetone, it quickly dissolves adhesives in the safest, easiest way and does not damage the natural lashes.

加强版乳液卸胶剂相比老款更细腻卸胶速度更快，不含丙酮成份，不会伤到自身睫毛，安全。乳液状态不会出现往下流或渗入的状况，新手也易操作。

30g



CREAM REMOVER PLUS

乳液卸胶剂

Cream Remover Plus is a must for eyelash extension. It quickly dissolves adhesives in the safest and easiest way.

乳液卸胶剂是嫁接师必备的产品。乳液质地可以安全便捷的卸除睫毛，新手也易操作。

10g

Extension Remover



FINA BUTYL 5/10g

COLOR 颜色
BLACK
ADHESION 黏贴力
BONDING LIFE 持久力
DRYING TIME 干燥速度
STIMULATION 刺激度
VISCOSITY 粘稠度



ULTRA X 5/10g

COLOR 颜色
GREY
ADHESION 黏贴力
BONDING LIFE 持久力
DRYING TIME 干燥速度
STIMULATION 刺激度
VISCOSITY 粘稠度



ULTRA PLUS 5/10g

COLOR 颜色
GREY
ADHESION 黏贴力
BONDING LIFE 持久力
DRYING TIME 干燥速度
STIMULATION 刺激度
VISCOSITY 粘稠度

Low Stimulation Glue 低敏胶水



MILD 10g

COLOR 颜色
BLACK
ADHESION 黏贴力
BONDING LIFE 持久力
DRYING TIME 干燥速度
STIMULATION 刺激度
VISCOSITY 粘稠度



PREMIUM CLEAR 10g

COLOR 颜色
TRANSPARENT
ADHESION 黏贴力
BONDING LIFE 持久力
DRYING TIME 干燥速度
STIMULATION 刺激度
VISCOSITY 粘稠度



ADVANCED 5/10g

COLOR 颜色
BLACK
ADHESION 黏贴力
BONDING LIFE 持久力
DRYING TIME 干燥速度
STIMULATION 刺激度
VISCOSITY 粘稠度

Remover



GEL REMOVER

啫喱卸胶剂

This gel type remover is easy to use because it is very rare for this gel type remover to get into the eyes.

啫喱卸胶剂是嫁接睫毛专用卸胶剂，啫喱的质地涂抹后不会往下流或渗透，可修复嫁接睫毛时使用，效率高。

15ml



REMOVER

一般液体卸胶剂

This liquid type adhesive remover has slight stimulation and is for expert use only.

嫁接睫毛专用 液体卸胶剂，耐用，性价比高。

10ml



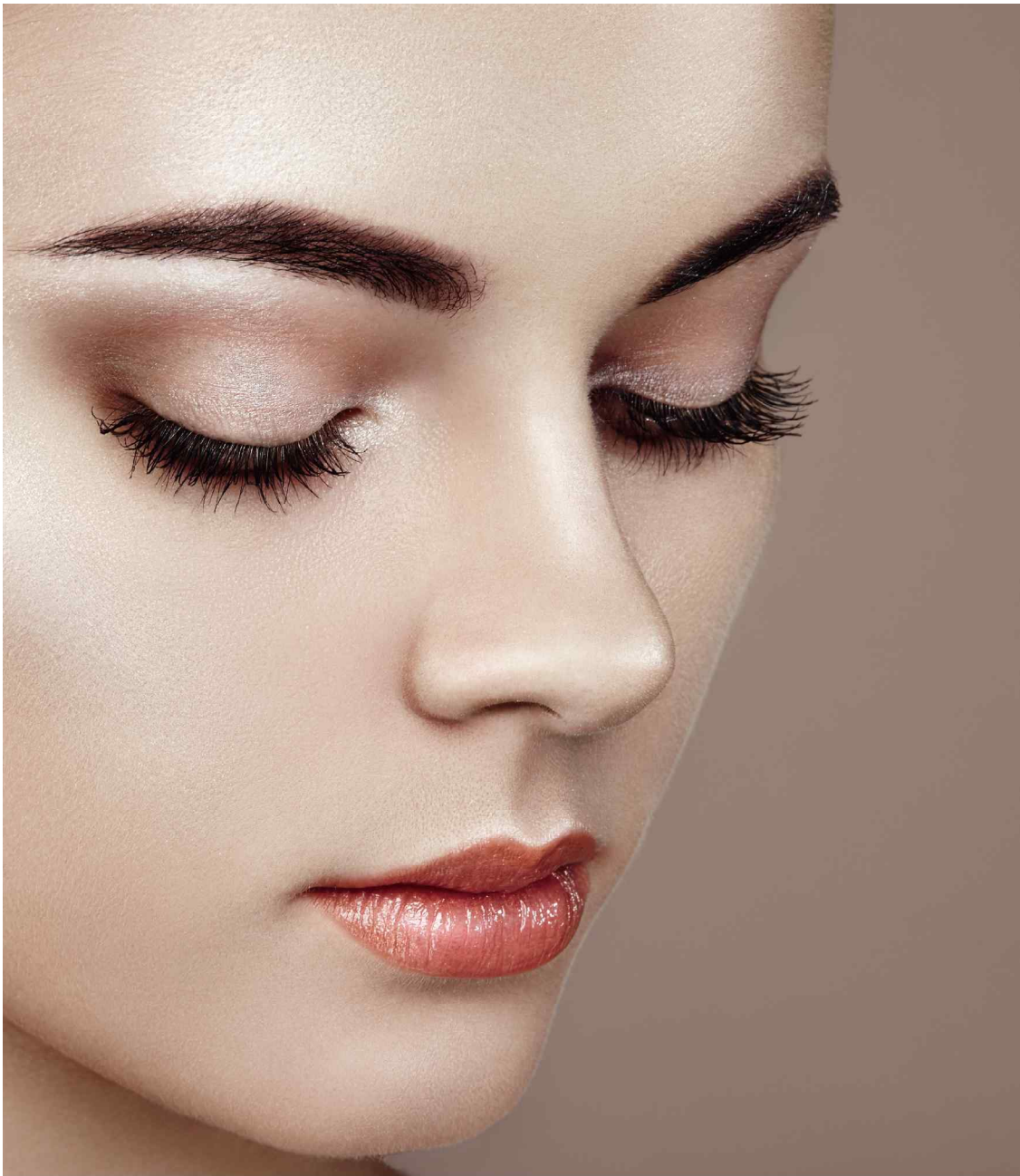
PREMIUM REMOVER

高档液体卸胶剂

This liquid type adhesive remover has low stimulation and is very mild on the eyes.

嫁接睫毛专用液体卸胶剂。相比普通卸胶剂低刺激，液体耐用性价比，卸胶速度快。

10ml



Extension Care

Extension Care

LASH FOAM

睫毛清洁慕斯

Helps remove germs and dust between the eyelashes due to fine foaming formula pass through the eyelashes. Lengthen the bonding life of eyelashes extensions as it cleanses eyelash pollutant like sodium, sebum, dead skin, and makeup residue etc., on daily use.

美睫前后使用，深层清洁睫毛以及眼睑皮肤，使睫毛以及眼部更加卫生，健康。良好的睫毛状态有效提高美睫师的美睫效率及美睫后的持久力。

100ml

EFFECT



CLEANSING WATER

卸妆水

pH Balanced to be similar with tears to prevent stimulation. Wipe makeup residue and old dead skin from the skin moistly and gently. Herbal extracts make skin moisturized and soft. Skin is purified, toned, relieved.

弱酸性卸妆产品，含有北美金缕梅提取物以及桉木水，卸妆同时深层清洁毛孔，并保持皮肤滋润柔软。

115ml



PURE MARINE COLLAGEN

纯海洋胶原凝胶霜

Pure marine collagen hydrogel cream contains marine collagen which improves skin moisture and hydration to have lighter and brighter skin. It helps anti-aging and firming skin.

含纯海洋胶原蛋白，补充水分，增加皮肤弹性，并形成保护膜，防止水分流失，使皮肤保持水润Q弹。

50g



Extension Care

READY FOR EXTENSION



PURE CLEAR LIP & EYE REMOVER

唇部眼部 卸妆液

Pure Clear Lip & Eye Remover has a natural herb extract so as not to cause a skin reaction. It helps to remove make up without any residue.

含有草本成份提取物，卸妆时眼部周围保持湿润不干燥，有效防止产生皱纹。

100ml



LASH PRIMER

睫毛 清洁液

Lash Primer helps you to remove oil and dust around the eyelids. It also sterilizes the eyelashes before eyelash extension.

嫁接前清洁睫毛上的油份，使胶水和睫毛更容易贴合，嫁接效果更持久。

50ml

EXTENSION CARE



CRYSTAL DROP COATING SEALANT

透明加固保护剂

Hyaluronic acid is contained in this sealant, which helps protect your eyelashes from external stimulus and supply nutrition to the eyelashes, keeping them healthy. This sealant also increases bonding life of the extensions and gives the lashes a wonderful shine and elasticity.

在睫毛上附上一层保护膜，有效隔离汗水和油脂。保护剂添加的透明质酸成分有效供应营养成分，起保湿修护作用。

TYPE - PEN TYPE, BRUSH TYPE

7 ml



BLACK DIAMOND COATING SEALANT

黑钻加固保护剂

Hyaluronic acid is contained in this sealant, which helps protect your eyelashes from external stimulus and supply nutrition to the eyelashes, keeping them healthy. Moreover, it is safe to apply with the use of natural pigments like gardenia extract.

功效：在睫毛上附上一层保护膜，有效隔离汗水和油脂。保护剂添加的透明质酸有效供应营养成分，起保湿修护作用。黑钻保护剂的颜料提取于栀子树，纯天然色素可以放心使用。建议每天使用1-2次。

TYPE - PEN TYPE, BRUSH TYPE

7 ml

AFTER CARE



EYE MAKE UP REMOVER PAD

卸妆湿巾

Eye Makeup Remover Pad is oil-free and is used to remove make up. The pads contain aloe vera extract, so it has no reaction but moisturizes the skin. It is ideal when you want to remove all eye makeup.

BLINK 卸妆湿巾不含油产品，嫁接后也可以放心使用。无刺激可卸眼线化妆。

50 oil free pads



NOIR MASCARA

NOIR 睫毛膏

Noir Mascara is specially designed for use on eyelash extension and won't be smeared by sweat and tears. It coats each lash softly with specialized fine polymer while it will give you fuller volume and rich eyelashes without mess. The keratin nutrient makes your lashes stronger and gives luminance and shine. The Tocopherol (Vitamin E) helps to minimize the stimulation.

防水，防晕染睫毛膏。特殊刷头，可呈现根根分明的效果，采用纯天然植物提取成份，卷翘之余还能供应营养成分，有效保养睫毛。

8ml

Extension Care



EXTENSION BASE 嫁接前 强化剂

This base removes coated surface of false eyelashes. It helps lashes to last longer and extends the bonding period.

涂抹到假睫毛嫁接根部，晾干后开始使用 清除假睫毛上的油脂和异物，提高胶水粘合度

Citrus, Peach, Banana
15ml



LINT FREE EYE PATCH 眼贴

BL 'Lint free eye patch' has our own specialized coating surface. It is strong for use with tweezers. It also keeps the eyes from drying out and provides intense nutrients to moisturize the under eye area during use.

含有胶原蛋白和熊果苷，皮肤镇定，修复皱纹的功效 提供保湿和营养，预防眼周皮肤暗淡，增加弹力效果。眼贴表面光滑，嫁接时不会起毛，代替胶布的高档产品。

5 pairs of patches



MD ADVANCED MD睫毛增长液

Intensified with higher concentration of peptide, MD ADVANCED penetrates better into the skin to help natural eyelashes grow stronger, giving the lashes thicker and more vivid look. It is better to use before applying toner after washing your face because it is easier to supply nutrition when there's no Demodex. It also can be used after eyelash extension or perm.

高浓缩肌肽容易渗透到皮肤，辅助再生使眼睫毛更长更丰满浓密 无妆状态更容易供应营养，所以洗脸后化妆之前先涂抹MD睫毛增长液。

5.6ml



LASH ESSENCE 睫毛精华液

A mascara-type product that has soft application without being sticky. It contains natural organic ingredients including ginkgo extract, cactus fruit extract, green tea extract, astragalus root extract and bamboo extract, all of which help enrich eyelashes and have a refreshing effect.

柔软无力稀疏的睫毛，用睫毛刷方式，无粘性简单柔和涂抹，使得眼睫毛更有弹性。

10ml



NOIR EYELINER NOIR 眼线液

Oil Free Liquid Eyeliner which is very easy to put on and would not be smeared or spreaded by sweat or water once it is applied. As it is oil-free product, it would not affect to the eyelash extension, so you can use this eyeliner at any time.

防水，防晕染眼线液。天然成分，有效保护眼周肌肤，无刺激，敏感人群亦可使用。无油产品，嫁接睫毛的客户可放心使用。

7g



EYELINER 眼线笔

Eyeliners are specially designed for use with eyelash extension and won't be smeared by sweat and tears. It is very soft on eyes. This package contains exclusive sharpener for eyeliner only.

防水，防晕染眼线笔，易上色，操作便捷。无油产品，嫁接睫毛的客户可放心使用。（配转笔刀）

Rich Black 炫黑 Caramel Brown 焦糖棕

1.6g / 2 colors



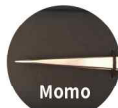
From Blink Lash to a more luxurious BL Brand Experience the legacy of Japanese craftsmanship!

日本资深工匠精心打造！通过科学计算尺寸和重量设计，即使长时间的连续操作也不会感到疲惫，是专为美睫师的双手量身定制的高科技产品！



1. Ergonomic design that ensures minimum fatigue in long term use. Weight and length, accurate tip design implemented to maximize comfort and precision.
2. All tweezers have anti-slip feature safety design
3. Precision drilled hole that can be combined with anti drop band.
4. A specialized design for volume extension makes it easier to make beautiful volume flair
5. Supreme Japanese high quality ensured by authentic warranty card
6. An ensuring warranty card is included in every tweezers to accompany life long usage.

1. 最好的品质保证
2. 防滑安全设计
3. 防掉落设计（可装置防掉落安全绳）
4. 经过科学计算的尺寸和重量设计，长时间的使用也不会感到疲惫。
5. 专业多根嫁接镊子，可快速夹出花瓣形状。



Momo



Use : 1 by 1 / to separate natural lashes
Type : Straight
Grip Length : 90mm (Maximum)
Length 140mm / Weight 15g

AJ-MO (momo)

用途 : 1by1/拨毛
尖端 形状 : 直筒型



Yuri



Use : 1 by 1 / to separate natural lashes
Type : Straight
Grip Length : 90mm (Maximum)
Length 140mm / Weight 15g

AJ-YU (yuki)

用途 : 1by1/拨毛
尖端 形状 : 直筒型
手柄 尺寸 : 96mm (取最长值)



Satsuki



Use : 1 by 1 / to separate natural lashes
Type : Gradual Curve
Grip length : 90mm (Maximum)
Length 140mm / Weight 15g

AJ-SAT (satsuki)

用途 : 1by1/拨毛
尖端 形状 : L型
手柄 尺寸 : 90mm (取最长值)



Tsubaki



Use : 1 by 1 / Separate natural lashes / Volume lash extension
Tip type : F-TYPE
Grip length : 80mm (Maximum)
Length 120mm / Weight 14g

AJ-TS (tsubaki)

用途 : 1by1/拨毛/多根睫毛
尖端 形状 : L型
手柄 尺寸 : 100mm (取最长值)



Sakura



Use : 1 by 1 / Separate natural lashes / Volume lash extension
Type : Curve
Grip length : 100mm (Maximum)
Length 140mm / Weight 15g

AJ-SAK (sakura)

用途 : 1by1/拨毛/多根睫毛
尖端 形状 : L型
手柄 尺寸 : 80mm (取最长值)

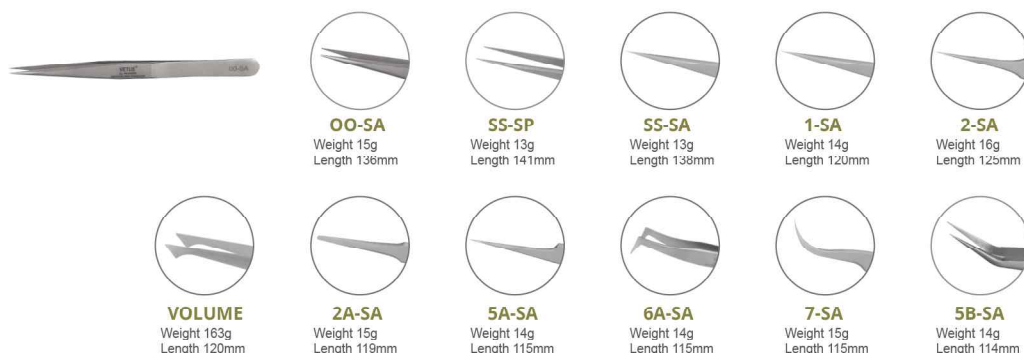
Tweezers

DUMONT TWEEZERS 杜蒙 夹



VETUS TWEEZER-SILVER VETUS 银色镊子

These tweezers are strong and light weight, perfectly balanced and made of stainless steel. Anti-static tweezers.
不锈钢材质防静电加工，不仅轻便，尖部精细硬度高，耐用的高档镊子。



VETUS TWEEZERS - BLACK VETUS 黑色镊子

Anti-static tweezers with stainless steel 防静电镊子



REGULAR TWEEZERS 练习用 镊子

Stainless Steel 不锈钢镊子



COLOR TWEEZERS 彩色镊子

Tweezers in various colors are available with two different shapes. Made of stainless steel. 不锈钢材质，颜色多样的彩色镊子。

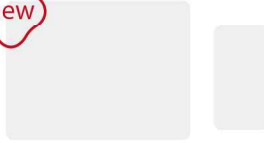


Extension Tools

for eyelash extension



Extension Tools



SILICONE WORK PAD 硅胶操作垫

Clean and efficient attach/detaching of synthetic lashes. Soft cushion like surface is suitable for volume extension. Prevents damage of tweezer tips. Can easily be reused after simple water cleaning.

解决睫毛板上胶条印记残留的难题，不影响贴纸粘性，有效提高密排睫毛的反复使用。良好的弹性大幅提高手工开花工序的开花效率，同时降低镊子尖端的磨损及变形。纯白色产品，整洁美观，易清洁！

140x185mm / 55x105mm



LASH HOLDER 睫毛板

Lash Holder holds and organize your lashes for faster and easier lash application. Two kinds of type lash holder are available.

睫毛板是，把需要嫁接的睫毛按种类按规格配置摆放的台子。可以缩短嫁接的时间。菲林胶水垫贴在睫毛板上，还可以当做胶水垫使用。

74x150x8mm / 60x110x8mm



SILICONE PAD 硅胶垫片

Silicone Pad makes lashes stand up slightly, so it is easier to pick up each individual lash.

用做散毛垫。散毛洒在硅胶垫片上，睫毛一端立起，方便用镊子夹睫毛，可以缩短嫁接时间。

50x65mm



BL LASH PAD BL 睫毛垫

Silicone material pad that will help you to pick up lashes easily when you use bulk lashes.

白色垫更清晰看到假睫毛，比起硅胶垫有更好的弹性，白色垫优异的弹性感，更容易夹睫毛，不容易损坏，可水洗，长期使用。

∅ 74mm



PUFF CASE 粉扑 盒子

Helpful to use with individual lashes for extension.

粉扑上铺上假睫毛，容易用镊子夹住，方便嫁接。

∅ 60mm / 105mm



LASH HOLDER (RING TYPE) 戒指型 睫毛垫

It is easy to pick up false eyelashes because lashes are fanned-out, and change the place of the holder according to the technicians convenience.

睫毛一排放上去之后，密排睫毛自然分开，用镊子容易夹睫毛，根据自己需要戒指位置随意调整，更有效率的睫毛垫。



COLOR GLASS PLATE 彩色 胶水垫

Prevents glue from curing too quickly due to the cool surface of glass materials.

玻璃材质冰凉效果，延长胶水的凝固时间，嫁接效果更持久。

Crystal / Green / Gold
∅ 50mm



CRYSTAL PLATE 水晶 胶水垫

Crystal Stone has the same advantages as the jade stone and a hard surface that won't be easily broken.

水晶的材质特性，延长胶水的凝固时间，嫁接效果更持久。

50x50mm

Extension Tools



JADE STONE 玉石 胶水垫

The low temperature of jade helps to extend the drying time of the adhesive.

玉石的寒性特性，延长胶水的凝固时间，嫁接效果更持久。

∅ 25mm / 50mm



GLUE PLATE FILM 菲林 一次性 胶水垫

Glue Plate Film is a disposable film to attach on the jade stone or crystal plate to put glue onto.

胶水使用时，放在玉石或者水晶片上面，容易贴，方便简易的一次性产品。

30ea



GLUE RING 戒指 胶水拖

The Glue Ring is bicuscular. These disposable glue ring make the process of applying lashes easier and quicker.

戒指胶水托分为2个格子，嫁接时戴在手指上，方便使用的一次性产品。

15x15mm



PLASTIC GLUE TRAY 塑料胶水垫

Enables efficient use of glue, primer, and remover. Easily disposable after use.

凹槽设计，不仅用于滴胶，睫毛清洁液，黑钻睫毛雨衣，卸睫毛时亦可灵活运用。



GLUE PIN 胶水针

Prevents clog of nozzle tip and can be used in replacement for glue cap.

胶水专用针，防止胶水瓶口堵塞，亦可替代胶水盖使用。

7x13mm



PREMIUM GENTLE TOUCH COTTON 化妆棉

Premium Gentle Touch Cotton 5 layer sheet is a newly developed products, which can be separated into 5 thin sheets for the various usages.

5层化妆棉，100%天然棉片。触感柔和，新概念5层化妆棉，根据需要还可以单层使用。

100% lint free, 80ea 100% 不起绒天然棉片. 80片



GENTLE TOUCH COTTON 轻柔化妆棉

100% Lint Free Natural Cotton Sheet with a soft and gentle touch and optical, ideal to cleanse the extended eyelashes.

100% 不起绒天然纯棉，质感柔和的高档化妆棉。

40ea



ALCOHOL PREPS PAD 酒精片

In order to sanitize hands, tweezers and all tools before eyelash extension application

嫁接前清洁并消毒嫁接师的手部，嫁接时使用的镊子等各种工具的消毒产品。

100 pcs

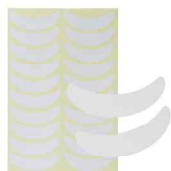


SPONGE 海绵

Pink sponge to use whilst applying eyelash extension.

卸妆或洁面时使用。

Extension Tools



SOFT PATCH 柔和眼贴

A product used to cover under-lashes in eyelash extension application, with a lint-free smooth surface. The white color relieves the stylist's eyestrain and elasticity is good. Easy to remove without skin irritation.

嫁接睫毛时，隔离下睫毛，固定上眼皮用。表面光滑不起绒，白色可以清晰看到黑色睫毛的状态，缓解嫁接师的眼部疲劳，粘度柔和，去掉时不会粘皮肤，同时伸缩性也非常好。

Material: TPU / 5pcs
Size: 50x12mm



3M PAPER 3M 纸质胶布

This item has same function as Micropore tape but also used for protection of your jade stone from damage with adhesive during eyelash extension procedure.

纸质原料做成，嫁接睫毛时隔离下睫毛，保护作用。



3M PLASTIC 3M 塑胶胶布

Micropore Tape is used for covering the lower lashes or to tape the eyelids during eye lash extensions application.

塑胶面温和胶布，嫁接睫毛时隔离下睫毛或者固定上眼皮用。



SURGICAL TAPE 医用胶布

Surgical grade tape, which will not stimulate skin during use.

防敏感医用胶布，嫁接睫毛时隔离下睫毛。



MIRROR 美容镜子

An easy to carry mirror and stand specially designed for eyelash extension application.

同时具备一般镜子和放大镜子两面美容镜子。

184 X 78mm



SQUARE HAND MIRROR 手柄化妆镜

Easy portable mirror, 2 color of BL new mirror, It has enough size to see your beautiful lash at once.

手柄式化妆镜，方便日常携带，方形镜片，大幅扩大照视面积。

Black , White / 166 x 95mm



4 LAYER FOLDABLE MIRROR 美容镜子

An easy to carry mirror and stand specially designed for eyelash extension application.

4段式美容镜，多角度观察自己的妆容，折叠设计便于携带。

Pink, White



EXTENSION MIRROR 美睫专用镜

Enables sanitary and efficient extension by providing wide view in multi angles without having to lift the eyelids.

美睫操作之后，可多角度观察客人的睫毛，无需用手拨/翻客人眼皮，卫生安全。可提高客人的满意度。

Extension Tools



LINT FREE APPLICATOR 嫁接专用棉棒

Lint free features prevent interference with extended lashes. Slanted tip design enables easy cleansing. 轻斜设计，不起棉絮，适用于清洁睫毛和涂抹雨衣 及卸睫操作。在卸除眼妆操作中，也不会勾到嫁接的睫毛。

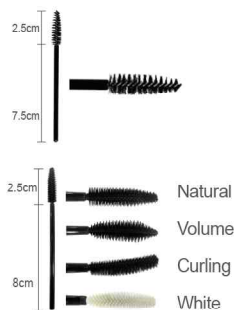
BLACK / CLEAR
150FA



MICRO BRUSH (MICRO SWAB) 迷你棉棒

Micro swab helps you to reach a small, sensitive area without stimulation on skin. 卸睫毛专用 以及 精细操作工具。

100ea



DISPOSABLE MASCARA BRUSH 一次性睫毛刷

It easily brushes through natural lashes to straighten any unruly lashes before application. This is also a great tool to use rush off any residue left from their mascara

用于嫁接前梳理睫毛 或 清除睫毛上异物时使用的一次性产品。

10ea



COMB BRUSH 睫毛刷

It easily brushes through natural lashes to straighten any unruly lashes before application.

嫁接前梳理睫毛，使睫毛顺畅，方便嫁接。



NANO MINI MIST 纳米喷雾器

Also known as nebulizer, and it helps glue to be cured to have less irritation when you nebulize the nano mist to eyelash extension glue.

嫁接后喷雾器的水蒸气可以减少胶水的味道以及刺激感。

35.5 X 112.5 X 27.5 mm /

Capacity of the liquid storage tank : 7ml

Power : 2 x AAA battery (not included) or USB



NECKLACE FAN 嫁接后 干燥器

It can be used to prevent any eye irritations during eyelash extension application. You can also use it as an air blower.

嫁接途中防止敏感流眼泪，可代替手动吹干球用。

122 X 65 X 17 mm

Extension Tools



AIR BLOWER 吹干球

Helps to dry glue faster. It also helps to get rid of residue. Various sizes are available.

吹干 胶水时 使用

Large - Black, Pink / Small - Blue, Pink
黑色 / 蓝色 / 粉色



HEATED EYELASH CURLER 烫睫毛器

A Heated Eyelash Curler to curl lashes as if they were permed.

嫁接前给客人睫毛做卷翘效果，更容易嫁接。

Black / White
1 x AAA Battery



SCISSORS 美容剪刀

Specially designed to trim eye lash extension.

嫁接前整理假睫毛时使用。



DAZZLING CRYSTAL 平底水晶贴

Real Swarovski Crystal made in Austria available in 12 different colors. Made of plastic gemstone. These crystals have a high reflecting surface, which gives the stone a dazzling shine.

澳洲施华洛世奇正品，12种颜色组成，闪亮光泽度高，美甲美睫多种用途可用的产品。

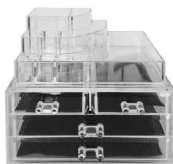
SS7(2.1mm) / 12 color



MANNEQUIN HEAD 半头 软模

For training purposes.

嫁接练习用，新手和初学者，必须预备的产品。



ACRYLIC STAND 亚克力 整理架

During eyelash extension application, efficient arrangement of tools and materials is important for speed and accuracy. This stand can be customized to suit the user, because it can be separated the top and bottom.

嫁接睫毛时，需要的配件整齐摆放，嫁接更顺手更方便。上下2层组成，根据需要按需摆放。

240 X 135 X 185 mm



2LED LIGHT HEAD LUPE 2LED 带灯放大镜

It helps the technician to see natural eyelashes and extensions more clearly because it prevents glare from LED lights.

放大睫毛和人毛，更清晰看到位置，嫁接更准确更细致。

Beauty Case



BL BLACK BEAUTY CASE
BL 黑色 化妆箱
342 X 220 X 115 mm



SILVER BEAUTY CASE
267 X 165 X 190 mm



BUTTERFLY BEAUTY CASE
245 X 145 X 125 mm



PAPER BEAUTY CASE-S
220 X 140 X 205 mm



PAPER BEAUTY CASE-M
300 X 180 X 250 mm



PAPER BEAUTY CASE-L
370 X 190 X 280 mm



PAPER BEAUTY CASE - BLACK
315 X 170 X 250 mm



PINK BEAUTY CASE
300 X 190 X 60 mm



CARRIER BEAUTY CASE
410 X 267 X 280 mm

Diamond Glitter Tattoo



The new generation Diamond Glitter Tattoo gives you jewel quality shine and fantastic look. It is different from inscribing on the body due to just drawing on your skin. Accordingly, the application is not only convenient but also fast and extremely easy to use. The stencil and pattern book will help you to draw the tattoo very easily even though no experience.

散粉的粒子通过科学计算，以颜色感和闪亮最佳的6角制作而成，80多种颜色随心打造想要的款式。



48 COLOR GLITTER TATTOO SET

48 颜色 钻石散粉 套装

48 Color glitter(1M~48PH), Skin glue-gold (Thin brush)x2, Skin glue-silver (Thick brush), Skin glue(Tube),Skin glue remover, Transfer liquid x2,Wood stick x2,Swab100ea, Tape, Mini air blower, Electronic shaver, Cleaningbrush, Fine brushx2, Stencilx10, Pattern book, Synthetic leather case

8g



12 COLOR GLITTER TATTOO SET

12 颜色 钻石散粉 套装

2M, 5M, 8M, 11M, 14M, 18M, 19M, 21M, 26M, 30M, 34M, 36M

8g



JAR TYPE 12 COLOR / 24 COLOR GLITTER TATTOO

12色 / 24色 钻石 散粉 散粉 套装

A SET (1M ~ 24H), B SET (25RS ~ 48PH)

7g

www.bllashes.com

AG Co.,Ltd.

#901, Kranz-techno, 388 Dunchon-daero,
Jungwon-gu, Seongnam-si, Gyeonggi-do,
Seoul 462-729, Korea

T +82.31.741.8977

F +82.31.741.8979

E marketing@bllashes.com

AG Co.,Ltd. Shanghai Office

Room 609A, Ruidu Building No.1, Lane 280,
Hongjing Road, Minhang District, Shanghai,
CHINA 201100

T +86.21.2612.0919

E hkpark@189.cn

